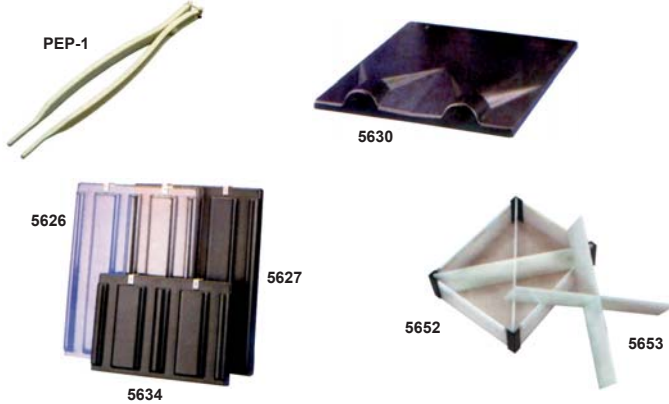


Aquaculture

Vertical incubators

These vertical incubation systems are engineered to increase the survival rate of salmon and trout eggs, provide superior use of floor space and give excellent water utilization. They can be stacked in four, eight or sixteen trays, which will allow you to retain valuable floor space. Maintaining and working the incubation system is efficient and simple, resulting in reduced labor costs. Around 96,000 eggs can be incubated per 8-trays system. The lower components are made of plastic in order to avoid any chemical contamination. Trays for trout and salmon eggs are available, to be specified during the ordering process.

Dimensions for **M-08**: 33" he. x 24" wid. x 25" depth.



ITEM	DESCRIPTION	PRICE
M-04	4 plates (48,000 eggs), 25 kg.	2 493.59 \$
M-08	8 plates (96,000 eggs), 50 kg.	4 079.20 \$
M-16	16 plates (192,000 eggs), 100 kg.	8 083.18 \$
PEP-1	Egg picker	28.99 \$
5630	Drip pan (4 or 8 trays).	391.49 \$
5634	Isolation panel, black (4 trays).	268.83 \$
5626	Isolation panel, clear (8 trays).	374.47 \$
5627	Isolation panel, black (8 trays).	263.83 \$
5652	Kits of 4 isolation baskets (4 baskets per tray).	384.37 \$
5653	Isolation basket divider (for 1 basket).	30.94 \$

Egg incubators

Made from transparent "plexiglass", these egg incubators allow for regular monitoring of the evolution of your eggs. The **INC-6** and **INC-18** models are powered by water coming from the side with a 1/2" Ø PVC adapter on which we add a ball valve to facilitate the flow adjustment. With the **HJ-1** and **HJ-2** models, water intake is coming from the top, an acrylic tube moves the water to the bottom of the incubator. Its purpose is well known for incubation with trout and catfish eggs. The movement of dead eggs to the surface makes it one of the biggest advantage of this incubation system. A sole incubator can hold in average 70,000 eggs (18"), the quantity can vary depending on the egg's diameter. These incubators can be placed in a fish farming troughs that can be used both as a stand and a water recovery basin.

Artemia incubators: The **BS25** commercial hatchery is capable of producing 300cc and more (20 tablespoons) of cysts in 17 liters of water. Simply turn off the air supply after hatching and allow empty eggs to float. The hatched nauplii will travel to the bottom where they can be removed simply by opening the valve. The pyramid shape (12" x 12" by 24" of height) promotes hatching. Great for rotifer culture too. Includes weighted rigid air tube, diffuser and drain valve. The optional powder-coated aluminum stand makes bench top mounting easy.

Vibert box (biodegradable): The method of Richard Vibert takes again the same principle but improves it appreciably: the eggs are placed in a plastic box which is easy to hide under the gravel. This box, which weighs 45 grams, is of modest size (70 x 63 x 45 mm). It is transported easily and contains a thousand of trout eggs. The perforations existing on the six faces let the current bring to eggs the oxygen which is necessary for them. They also made it possible to alevins to leave the box by themselves and to continue their development under the gravel, i.e. under the natural conditions to which they owe their rusticity. At a 30cm water depth, just dig a 20cm deep hole, place the box and cover it with some gravel.



ITEM	DESCRIPTION	EGGS QTY	PRICE
INC-6	Incubator 6" of height, silo type, 1/2" inlet.	17 000	173.00 \$
INC-18	Incubator 18" of height, silo type, 1/2" inlet.	70 000	185.00 \$
HJ-1*	Incubator 18" of height, McDonald type.	70 000	159.00 \$
HJ-2	Incubator 18" of height, McDonald type.	70 000	215.00 \$
BS25	Artemia eggs incubator, 17 liters of capacity.	300cc	259.00 \$
HS1	Stainless steel Stand for BS25 incubator.	---	148.00 \$
JH	Hanger for HJ-1 incubator.	---	28.50 \$
VIBERT	Vibert box, incubator for river, cube-shaped.	1000	32.00 \$

(* Hanger not included).



Brine shrimp hatcher, 2.5 liters

This small brine shrimp hatcher will hatch up to two tablespoons (35 cc) of brine shrimp eggs. Can be used for rotifer culture or even as a McDonald type hatchery for a small amount of fish eggs.

Each 2.5-liter, molded acrylic cone hatcher comes with a molded-in plastic drain valve, 6' of 3/16" aquarium tubing, rigid air delivery tube, splash cap, air valve, collection cup and support stand. Made in USA.

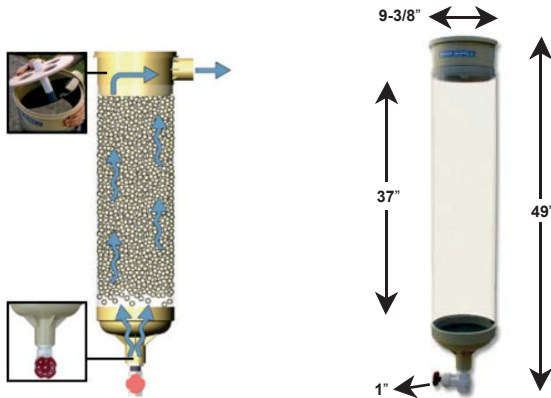


BS252

ITEM	DESCRIPTION	PRICE
BS252	Brine shrimp hatcher, 2.5 liters.	150.00 \$
68287	Air pump, 115V / 2.8 watts.	32.19 \$
68289	Air pump, 115V / 3.8 watts.	60.17 \$

Up-well egg incubator

This incubator has been designed for efficiency; to reduce labor and produce healthy fry in a greater capacity. The constant up-flow water circulation of up-well incubators hold the eggs in constant suspension, virtually eliminating those troublesome stagnate areas, which are common with "tray-style" incubators. Up-well incubators also deliver comparable hatch rates to the tray incubators, but with far less labor and without chemical treatments! Capacity of around 30 liters, or 280,000 rainbow trout eggs.



ITEM	DESCRIPTION	PRICE
INC1000	Up-well incubator, 30 liters.	845.00 \$

Conical hatching jar

Molded from polycarbonate, this tank can be used for hatching both rotifers and artemia. Tank measures 13½" in diameter, 24" high and includes a clear lid. It produces up to 300 cc (20 tablespoons) of cysts in 5 gallons of water. The stand measures 13½" in diameter, 19" high and features a bottom access port to the drain valve.



CC-H10

The hatcher includes clear lid, rigid air tube, 8' aquarium tubing and drain valve. Air pump sold separately.

ITEM	DESCRIPTION	PRICE
CC-H10	Hatching jar and stand.	427.00 \$
CC-H1	Hatching jar alone.	263.00 \$
CC-H2	Stand for hatching jar.	202.00 \$
CC-H12	Kit of 2 hatching jars and 2 stands.	815.00 \$
68287	Air pump, 115V / 2.8 watts.	32.19 \$
68289	Air pump, 115V / 3.8 watts.	60.17 \$

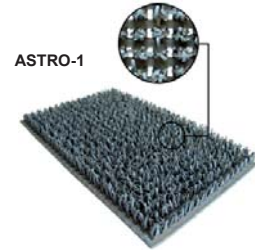
Astroturf carpet

Carpet for eggs incubation. Made of plastic with openings for an effective drainage. Especially used for incubation in natural environment.

Sold by linear foot or in roll of 3'. Other models for clams catching available upon request.



ASTRO



ASTRO-1

ITEM	DESCRIPTION	PRICE
ASTRO-1	Astroturf carpet, roll of 3' with holes.	24.00 \$ / ft
ASTRO	Astroturf roll, 3' x 55' with holes.	1 048.75 \$
ASTRO-P	Astroturf roll, 3' x 75' without holes.	1 142.40 \$

Sponge filters

"Hydro-Sponge" filters are perfect for aquarium and small tank filtration. They are capable of moving more water than other sponge filters, are self-weighting and act as mechanical and biological filters. Simply attach to aquarium airline tubing, supply 0.05 cfm and filtering begins.

For higher filtration rates, a powerhead pump may be attached in place of air power. Easy to clean, 1" diameter tube. Overall height may be shortened by cutting the tube.

The Hydro-Sponge Pro series (**HYDROPRO**) is made in all the same sizes as the standard line, but it uses reticulated foam. This gives the sponge itself almost double the efficiency as compared to the Hydro-Sponge regular series.

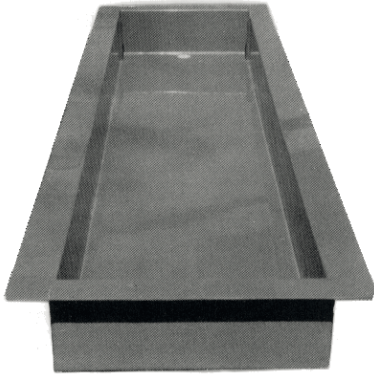


ITEM	DIMENS. (sponge)	DIMENS. (aquarium)	SURFACE AREA	PRICE
HYDROMINI	2¼" x 2"	>7 us gal	--	7.00 \$
HYDRO1	3¾" x 2"	>10 us gal	46.1 in ²	8.00 \$
HYDRO2	2¾" x 4"	>20 us gal	49.4 in ²	9.00 \$
HYDRO3	3¾" x 4"	>40 us gal	74.4 in ²	10.00 \$
HYDRO4	4¾" x 4"	>80 us gal	104.7 in ²	11.00 \$
HYDRO5	5¾" x 4"	>125 us gal	138.4 in ²	12.00 \$
HYDROPRO2	2¾" x 4"	>20 us gal	49.4 in ²	10.00 \$
HYDROPRO3	3¾" x 4"	>40 us gal	74.4 in ²	12.00 \$
HYDROPRO4	4¾" x 4"	>80 us gal	104.7 in ²	13.00 \$
HYDROPRO5	5¾" x 4"	>125 us gal	138.4 in ²	15.00 \$

Fibreglass troughs

Entirely made of fibreglass, solid, durable and non-toxic, they are the best troughs on the market. They are specially made for all types of aquaculture applications either in cold or hot water.

Very easy to clean with the gelcoat finish available in different colors. Charcoal gray as a standard color.



- Very resistant trough
- "GELCOAT" inner finish.
- Superior quality.
- Competitive price.

ITEM	DIMENSIONS (le. x wi. x he.)	VOLUME	PRICE
AFV-36	36" x 18" x 13.5"	143 liters (38 us gal)	P.O.R.
AFV-94	94" x 15" x 8"	225 liters (49 us gal)	P.O.R.

Fish farming troughs

These enameled aluminum troughs are used for eggs incubation and fry rearing. The fully equipped trough can be installed quite rapidly. They are lightweight, robust and of perfect color while still being the most economical trough on the market.

The six troughs kit is standing on a metal rack (included) that uses minimum space, which makes it the most functional set on the market. Each trough measures 10' long x 17" wide x 8" height. Our troughs are available by unit or by kit of six troughs.



A-1017



A-61017

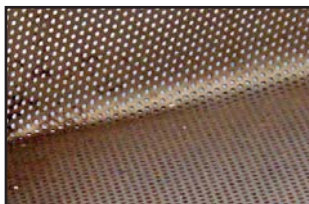
ITEM	DESCRIPTION	PRICE
A-1017	Trough (10' le. x 17" wi. x 8" he.)	P.O.R.
A-61017	(6) troughs and stands kit.	P.O.R.
G-01	Aluminum grid for trough	P.O.R.

Incubation & fish-farming baskets

This basket rearing system features a stainless incubation and fry rearing tray which increases the percentage of success and diminishes the maintenance. This basket is a fry rearing system that has been used and improved for eggs incubation and fry rearing up to five grams in the same tank.

The system is very simple, a basket is hanging in the semi-square tank retaining eggs or fry, the bottom of the basket is full of tiny holes that procure a clean surface all the time.

You are now done with the long periods of time required by every day maintenance and mortalities associated to accumulated sediments. When the first weeks of feeding are over, you only have to take the basket off and use the whole tank for rearing. A complementary system entirely self cleaning.



ITEM	DESCRIPTION	PRICE
AP-1	Stainless steel basket for tank SST-4222.	P.O.R.
AP-2	Stainless steel basket for tank SST-3127.	P.O.R.
AP-3	Stainless steel basket for tank SST-2618.	P.O.R.

Von Bayer ruler

The VON BAYER method allows to know the number of eggs in a volume of 1-liter depending on the average diameter of the eggs. The 30 cm plastic ruler is the main tool of measurement. **Instructions and reference tab included.**



ITEM	DESCRIPTION	PRICE
RVB-30	30-centimeter ruler.	12.00 \$

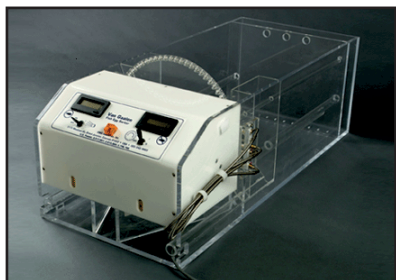
Automatic egg sorter

Variable egg sizes: Using this patented standard disc, the Van Gaalen egg sorter will sort trout from 150 to 500 per ounce, or if equipped with the salmon disc, it will sort any size of salmon eggs. Best of all, you don't have to change discs to handle different sizes of eggs. Our model **N-100** sorts 100,000 trout eggs per hour.

Accuracy: The patented technology in both models uses fibre optics and modulated infrared light to scan the eggs and assures you the highest level of accuracy. Our customers regularly report 98 to 99% of accuracy.

Egg counts: We know accurate counts are important, so we have incorporated two types of counters for this sorter: one for live eggs and another one for dead eggs.

Reliability: More than twenty years of proven performance since our first model. Of course, we have improved our design as new ideas and technology have proven to be functional but we have always used the finest material and highest level of workmanship.



ITEM	DESCRIPTION	PRICE
N-100	Egg sorter with one disc included.	P.O.R.
DS-1	Salmon disc (large eggs).	P.O.R.
DS-2	Disc for trout or small eggs.	P.O.R.

Acrylic tubes

Tubes **T-4**, **T-6** and **T-9** fit with the rubber bulb (see product tab below). They are available in packages of four (4) tubes with 12" of length. Other models are sold in bars of 6'.



ITEM	INT. Ø	EXT. Ø	FORMAT	PRICE
T-4	4 mm (3/16")	8 mm (5/16")	pack of 4	14.20 \$
T-6	6 mm (1/4")	10 mm (3/8")	pack of 4	14.20 \$
T-9	9 mm (3/8")	13 mm (1/2")	pack of 4	18.20 \$
T-25	25 mm (1")	32 mm (1 1/4")	bar of 6'	19.60 \$
T-70	70 mm (2 3/4")	76 mm (3")	bar of 6'	46.40 \$
T-600	146 mm (5 3/4")	152 mm (6")	bar of 6'	168.00 \$
T-800	196 mm (7 3/4")	203 mm (8")	bar of 6'	448.00 \$

Rubber bulbs

The rubber bulbs are useful for incubation and various operations at the laboratory. These bulbs can be used with our acrylic resin tubes (T-4, T-6 and T-9), sold separately. Simply bore a hole with the good diameter and insert your tube. **Note:** the rubber bulb **13-681-50** is compatible only with the following tubes: T-4 and T-6.



F-14071



13-681-50

ITEM	DESCRIPTION	PRICE
BRR-90	Rubber bulb, 90 ml.	17.42 \$
F-14071	Rubber bulb, 150 ml.	26.49 \$
13-681-50	Safety bulb.	23.95 \$

Aquaculture

Flakes

At Aquamerik, we are dedicated to provide you with the best fish food available. We have different manufacturers from which we select our specialities. Flakes are vacuum-packed in FDA approved nylon bags. Other types of flakes available upon request.

Plankton & Krill flakes

This food made of plankton, krill and spirulina makes it a balanced fish flake for fast growth and shortage free.



Highly nutritious and containing natural color enhancers, this flake has digestible proteins rich in carotenoids, essential for fish who need to gain their true colors.

Analysis: Crude proteins 46% min, crude fat 14% min, fibre 3% max, moisture of 5% maximum.

ITEM	DESCRIPTION	PRICE
PLANKR	Plankton & Krill flakes 1-lb bag (454 g).	24.00 \$

Egg flakes

Egg was developed by nature to be the most complete food you can get, it provides ultimate nutrition. Professional breeders have trusted this premium egg fish flake for decades.

You can't go wrong with this flake food.

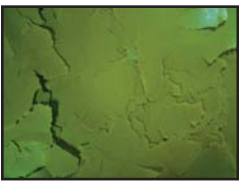
Analysis: Crude proteins 45% min, crude fat 6% min, fibre 5% max, moisture of 9% max.



ITEM	DESCRIPTION	PRICE
OEUF	Egg flakes, 1-lb bag (454 g).	24.00 \$

Spirulina flakes

Made from 50% of spirulina and kelp, it is an excellent vegetable flake for all fish. An excellent source of beta-carotene. Spirulina is a well know source of immunostimulant that increases resistance against diseases on captive fish.



The addition of kelp and chlorophyll give to our flakes the appearance and odor that trigger an immediate nutritional response.

Analysis: Crude proteins 40% min, crude fat 8% min, fibre 4% max, moisture of 10% max.

ITEM	DESCRIPTION	PRICE
SPIR	Spirulina flakes, 1-lb bag (454 g).	24.00 \$

Earthworm flakes

An exceptional flake developed for live breeders and for all tropical fish. We use earthworms as the main ingredient.

The benefits of feeding earthworms have been known to professional breeders for years, mainly for maximum eggs and fry production.



These flakes are dried at much lower temperatures than other conventional flakes.

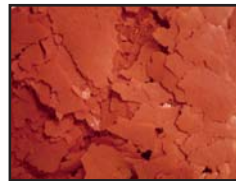
Analysis: Crude proteins 42% min, crude fat 14% min, fibre 4% max, moisture of 10% maximum.

ITEM	DESCRIPTION	PRICE
VERS	Earthworm flakes, 1-lb bag (454 g).	24.00 \$

Brine shrimp flakes (Artemia)

Brine shrimp flake food for marine and freshwater fish is extremely popular among breeders for many reasons.

Unlike many of our competitors that advertise a "brine shrimp" flake, our inclusion rate of brine shrimp is based on a more "dry weight" basis, not the weight of a frozen block of brine shrimp that is, on average, 85% water.



We use de-shelled artemia (your fish do not need difficult-to-digest shells) to create a diet with complex proteins and important enzymes that are found in your fish's natural diet and that aid in digestion.

Analysis: Crude proteins 50% min, fat 12% max, fibre 3% max, moisture of 10% maximum.

ITEM	DESCRIPTION	PRICE
BSF11Z	Brine shrimp flakes, 1-lb bag (454 g).	25.00 \$

Beef heart flakes

The only flake known to have a pure beef heart as the main ingredient. Ideal for angelfish, discus and even axolotls. An excellent staple food for tropical fish.

This food is used by the majority of our professional breeders for maximum production of eggs and fry.



Analysis: Crude proteins 48% min, crude fat 6% min, fibre 5% max, moisture of 9% maximum.

ITEM	DESCRIPTION	PRICE
PGF11Z	Beef heart flakes, 1-lb bag (454 g).	DISC.

Flakes (continued)

Meat eaters flakes



This flake is destined to the most carnivorous of fish who need protein based meat. Its hearty aroma and robust flavor will tempt even the pickiest of fish.

Flakes recommended for angelfish, discus and any other types of fish requiring animal proteins.

Analysis: Crude proteins 48% min, crude fat 8% min, fibre 4.2% max, moisture of 8.2% maximum.

ITEM	DESCRIPTION	PRICE
VIAN	Meat eaters flakes, 1-lb bag (454 g).	DISC.

Seafood lovers flakes



The seafood lovers flakes are known for being premium low-mid protein, excellently complemented flake food. We recommend these seafood flakes for your omnivorous cichlids which have evolved in clean unique biotopes such as the Great Lakes of Africa. They are also well suited to many marine species.

Main ingredients: krill meal, soy flour, fish oil (preserved with mixed tocopherols), wheat starch, beet powder, spirulina algae, natural mixed tocopherols, with added vitamins and minerals.

Analysis: Crude proteins 47% min, crude fat 12% min, fibre 4% max, moisture of 10% maximum.

ITEM	DESCRIPTION	PRICE
FRUITSMER	Seafood lovers flakes, 1-lb bag (454 g).	22.00 \$

Discus flakes

This super premium fish flake is a special formulation of strong color enhancers, powerful growth stimulants and highly delectable taste attractants to provide your tropical fish, especially angelfish and discus, with superior nutrition.

Analysis: Crude proteins 46% min, crude fat 14% min, fibre 7% max, moisture of 8% maximum.



ITEM	DESCRIPTION	PRICE
DISCUS	Discus flakes, 1-lb bag (454 g).	24.00 \$

Tropical mix flakes



These flakes are an excellent staple food for those who just want one type of food.

It is a combination of all our good flakes, such as beef heart, krill and spirulina.

Ideal for aquariums with different types of fish.

Analysis: Crude proteins 46% min, crude fat 6% min, fibre 4% max, moisture of 9% max.

ITEM	DESCRIPTION	PRICE
TROP	Tropical mix flakes, 1-lb bag (454 g).	25.00 \$

Starter flakes

These flakes are the result of a mix of various ingredients that can be consumed by the majority of fish. Among these ingredients the followings are found in the starter flakes: soy meal, shrimp meal, krill meal, wheat flour, corn starch, calcium phosphate, artificial colors, and much more.



Also available in 1/2 lb format.

Analysis: Proteins 45%, fat 10%, fibre 2% max, moisture of 8%.

ITEM	DESCRIPTION	PRICE
DEPART	Starter flakes, 1-lb bag (454 g).	18.00 \$

Growth Plus flakes



Breeders know the benefits of a quality, high protein food. This great formula is designed to produce speedy growth.

Analysis: Proteins 55%, fat 7%, 4% of ashes, moisture of 8%.

ITEM	DESCRIPTION	PRICE
CROISS	Growth Plus flakes, 1-lb bag (454 g).	DISC.

Natural color flakes

The best natural flake to improve colors on all tropical fish. Only natural foods.

Analysis: Crude proteins 45% min, crude fat 4% min, fibre 2% max, moisture of 8% maximum.



ITEM	DESCRIPTION	PRICE
COULEUR	Natural color flakes, 1-lb bag (454 g).	DISC.

Aquaculture

Freeze-dried food

Bloodworms

Bloodworms are actually Chironomus insect larvae. Very popular among fish, they constitute an excellent diet for the most difficult fish in your aquarium. They have an ideal size and are eagerly eaten.



Bloodworms can be rehydrated with water, garlic juice or liquid vitamins by spraying them on a sheet of aluminum paper. Natural product that may cause allergic reactions to some people.

Analysis: Proteins 58%, fat 5%, fibre 2%, moisture 4%.

Rotifers

Freeze-dried rotifers measure around 150 microns. They can be rehydrated and given as first fish food for both marine and freshwater fish or for use in the reefs.



Brine shrimps (artemia)

Freeze-dried artemia is much more convenient to feed than live artemia and the fish love it. This is a very small size food, ideal for young fish under 8 weeks old. Can be pressed anywhere on the aquarium sides for an easy feeding, or incorporated in your home-made mixes for an attractive and nutritional value.



Analysis: Proteins 50%, fat 2%, fibre 3%, moisture of 5%.

Tubifex worms

Excellent food for genitors.

Analysis: Proteins 50%, fat 2%, fibre 3%, moisture of 6%.



Krill

The krill has all the essential animated fatty acids required for fish. Rich in astaxanthin pigment, a carotenoid that improved the color.

Fine krill (**FDKRILLF**) also available.

Analysis: Proteins 60%, fat 10%, fibre 19%, moisture of 6%.



Krill powder

Ultra fine krill powder. Used in numerous food for commercial fish. The high levels of proteins and fatty acids (HUFA) make it an excellent fish food for fry and invertebrates.

Analysis: Proteins 60%, fat 10%, fibre 19%, moisture of 6%.

Copepods



Excellent source of proteins and carotenoids. High HUFA content and fatty acids.

Analysis: Proteins 57%, fat 7%, fibre 4.9%, moisture of 7.6%.

Plankton, Euphasia Pacifica

These are the smallest ocean planktons you can find, about 1/4" of length, some people call these "krill". Our plankton is carefully treated during harvest and freeze-dry process to ensure a healthy organism. High rate of proteins, carotenoids and HUFAs. Proper handling and low-temperature drying keeps natural flavourants, proteins & lipids largely intact.



Analysis: Proteins 68%, fat 8%, fibre 13%, moisture of 8%.

Freshwater shrimps



Suitable for larger fish, you can crumble them for smaller fish.

Analysis: Proteins 60%, fat 5%, fibre 5%, moisture of 8%, ash 20%.

Mysis shrimps

Freshwater shrimps similar to Euphasia Pacifica. Many fish that refuse krill or plankton will gladly take the Mysis.

Analysis: Proteins 49% min, fat 39.5%, moisture of 4.7%, ash 6.3%, EPA of 11.6, DHA of 8.4.



Daphnia



This multipurpose food can be given to tropical or cold water fish and marine turtles.

Analysis: Proteins 48.7%, fat 14.4%, fibre 6.4%, ash 27.8%.

ITEM	DESCRIPTION	PRICE
FDBW	Freeze-dried bloodworms, 100 g.	DISC.
FDART	Freeze-dried artemia, 100 g.	14.00 \$
FDCREV	Freeze-dried freshwater shrimps, 100 g.	10.00 \$
FDPL	Freeze-dried Euphasia Pacifica, 100 g.	20.00 \$
FDROT	Freeze-dried rotifers, 100 g.	30.00 \$
FDDAPH	Dried daphnia, 100 g.	5.00 \$
FDMYS	Freeze-dried Mysis, 100 g.	15.00 \$
FDCOP	Freeze-dried copepods, 100 g.	15.00 \$
FDTUB	Freeze-dried Tubifex, 100 g.	15.00 \$
FDKRILL	Freeze-dried Krill, 100 g.	13.00 \$
FDKRILLF	Freeze-dried fine krill, 100 g.	10.00 \$
KP	Krill powder, 100 g.	10.00 \$

Pellets / bits

New Life Spectrum

Discus formula (1 mm): Crude protein 35% min, fat 5% max, fibre 5% max, humidity 10% max, diameter of 1/8". Format of 300 g.

Long Fish formula (3 mm): Crude protein 36% min, fat 5% max, fibre 5% max, humidity 10% max. Format of 2.2 kg.

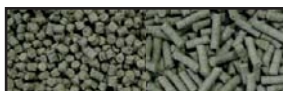
Grow formula (0.3 mm): Crude protein 50% min, fat 9% max, fibre 5% max, humidity 10% max, Format of 2.2 kg.

Pork liver bits

Analysis: Crude protein 44% min, fat 4% max, fibre 4% max, humidity 8% max.

Cichlid pellets

Analysis: Crude protein 40% min, fat 7% max, fibre 7% max, humidity 8% maximum.



Vegetal pellets

Analysis: Crude protein 44% min, fat 4% max, fibre 4% max, humidity 8% maximum.



TetraColor (ColorBits)

This is a supplemental diet designed to naturally promote the beautiful colors in tropical fish. TetraColor Tropical Flakes contain essential nutrients and added vitamin C which provide optimum care and help promote energetic fish and long life.

Staple ingredients:

Fish meal, ground brown rice, torula dried yeast, shrimp meal, wheat gluten, dried potato products, soybean oil, fish oil, algae meal, gelatin, sorbitol, lecithin, dehulled soybean meal, feeding oat meal, l-ascorbyl-2-polyphosphate (vitamin C). Artificial colors (including blue 2 and yellow 5). Ethoxyquin as a preservative. **Analysis:** Proteins 47.5% min, fat 6.5% min, fibre 2.0% max, moisture 6.0% max, 1.5% phosphore min.

TetraMin CRISP

Up to 35% less waste than competing flakes means more usable food, clearer water and healthier fish. Superior, highly digestible ingredients. Concentrated color: high level of carotenoids stimulates richer color.

Phosphate reduction rate up to -10%.

Staple ingredients:

Fish meal, dried yeast, cornstarch, shrimp meal, wheat gluten, ground brown rice, potato protein, soybean oil, dehulled soybean meal, fish oil, guar gum, dried skimmed milk, sorbitol, algae meal, lecithin, krill, L-carnitine, ascorbic acid.

Included colors: canthaxanthin, blue 2 lake, red 3 dry, yellow 5 lake, yellow 6 lake. Ethoxyquin and citric acid both as preservatives. Proteins min. 45%, fat min. 12%, fibre max. 3%, humidity max. 9%, phosphorus min. 1.2%, niacin min. 550 mg / kg, choline min. 2000 mg / kg, inositol min. 1000 mg / kg, L-carnitine min. 123 mg / kg, vitamin-C min. 425 mg / kg.

ITEM	DESCRIPTION	PRICE
NLI48720	New Life Spectrum Discus, 300 g.	DISC.
NLI48721	New Life long fish formula, 5 lbs.	DISC.
NLI48722	New Life Grow formula, 5 lbs.	DISC.
COMMUN	Community bits 0.5 mm, 1 lb.	15.00 \$
CICHLBIT1	Bits for cichlids 1 mm, 1 lb.	18.70 \$
CICHLBIT2	Bits for cichlids 2 mm, 1 lb.	18.70 \$
CICHLBIT3	Bits for cichlids 3 mm, 1 lb.	18.70 \$
JUMBO	Bits for big fish 4 mm, 1 lb.	15.00 \$
JUMBO-6	Bits for big fish 6 mm, 1 lb.	17.00 \$
VEGBIT1	Vegetal bits 1 mm, 1 lb.	18.70 \$
VEGBIT2	Vegetal bits 2 mm, 1 lb.	17.25 \$
VEGBIT3	Vegetal bits 3 mm, 1 lb.	17.25 \$
PORKLIV	Pork liver sticks, 1 lb.	DISC.
TETRAMIN	TetraMin tropical crips, 185 g.	DISC.
COLOR	TetraColor, 300 g.	DISC.
COLOR2	2 boxes of TetraColor, 300 g.	DISC.

Spirulina pills

Analysis: Crude protein 35%, fat 6% max, fibre 5%, humidity 6%.



ITEM	DESCRIPTION	PRICE
SPIRUCAP	Spirulina pills, 1 lb (454 g).	17.00 \$

Frozen food

Frozen adult Brine shrimps (Artemia)

These frozen artemia are an economical alternative to live artemia production. Package of 1 lb.



Frozen Bloodworms

Bloodworms are actually larvae of an insect, the Chironomus. It is a natural product that can trigger an allergic reaction among some people. Package of 1 lb.



Analysis: Proteins 58%, fat 5%, fibre 2%, humidity 4%.

Frozen Mysis

Ingredients: Mysis shrimps, water, vitamin B12, pyridoxine hydrochloride, l-ascorbyl-2-polyphosphate (vitamin C), riboflavin, thiamine mononitrate, biotin, choline chloride, folic acid, pantothenic acid, inositol, niacin.

Analysis: Crude protein 10.5%, fat 1.0%, fibre 2.0%, humidity 85.0%.

Frozen Krill

These frozen artemia are an economical alternative to live Krill production. Package of 1 lb.



ITEM	DESCRIPTION	PRICE
ARTEMIES	Frozen adult Brine shrimps, package of 1 lb.	15.80 \$
BLOOD	Frozen Bloodworms, package of 1 lb.	20.00 \$
KRILL	Frozen Krill, package of 1 lb.	21.00 \$
MYSIS	Frozen Mysis, package of 1 lb.	21.00 \$

Additives

NatuRose™ astaxanthin

NatuRose™ is a natural source of astaxanthin. It is derivatized from *Haematococcus pluvialis* microalgae and has about 15,000 ppm of natural astaxanthin. This highly concentrated form of natural astaxanthin has been carefully formulated into a fine, free flowing dark red powder and is an essential nutritional requirement and a pigment source for aquatic animals.



Recommended use is 1 teaspoon per pound of food.

Pure spirulina powder

This 100% pure spirulina powder is excellent for *Daphnia* or baby brine shrimps. Great for a small fry starter food when baby brine shrimps are becoming too big.



Analysis: Proteins 45% min, carbohydrate 19% min, fat 6% max, minerals 8% min, humidity of 7% maximum.

Infusyl

Infusyl is composed of dehydrated micro-organisms, which are close to the Infusoria. Proteins contain most of the useful amino acids, especially lysine (amino acid growth).

Vitamins: wide range, divided in proteins and lipids, in particular ergosterol (provitamin D). Inorganic materials: include a significant amount of phosphorus (1%) and trace elements.

The richness of Infusyl requires a correct dosage of alevins diet. A tube contains 10 pills, this makes proportioning easier. These tablets can also be cut into smaller pieces, allowing a more accurate dosage.

This food dissolves very slowly and allows alevins to get their meal at any time of the day. The product color lets you see if your fish have actually eaten.



Composition:

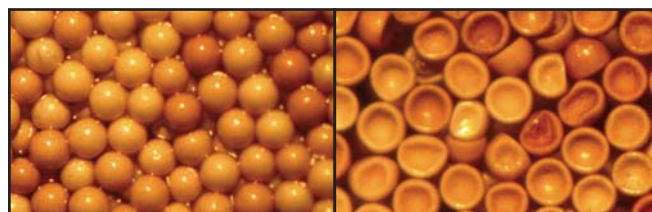
Proteins 43%
Carbohydrate 31%
Lipids 5%
Minerals 5%

Brine shrimp eggs (Artemia)

These brine shrimp eggs from the American saltwater Great Lakes are certified free of disease. The decapsulated eggs are used when you don't want them to hatch, so there will be no larvae.

Analysis: Proteins 60%, fat 24%, ash 4.4%, humidity 8.5%.

GSL hatching rate	Nauplius per gram
90%	250,000
85%	240,000
80%	230,000
70%	210,000
65%	190,000
60%	170,000



Brine shrimp enrichment (Artemia)

The Selco® Easy DHA, based on the original Selco® (Self Emulsifying Liquid Concentrates) are designed to simplify and optimize enrichment procedures.

Thanks to advanced formulations, the best just got even better: easier preparation (no mixing required), easier application (1 single dose) and easier storage (more temperature stable). Easy DHA Selco® incorporates higher levels of DHA in the artemia.

Analysis:

	Range
Humidity:	30%
Crude lipids:	67%
Crude ash:	1%
Crude fibre:	1%
Phosphorus:	0.2%
Vitamin A:	1,500,00 IU/kg
Vitamin D3:	150,000 IU/kg
Vitamin E:	3,600 mg/kg
Vitamin C:	800 mg/kg
Antioxidant:	Ethoxyquin, BHA
DHA/EPA:	2.5
Sum(n-3)HUFA:	min. 200 mg/g dwt



ITEM	DESCRIPTION	PRICE
NATUROSE	NatuRose Astaxanthin, 2 oz (60 mL).	12.00 \$
NATUROSE2	NatuRose Astaxanthin, 1/2 lb (226 g).	45.00 \$
SPIRULINE	Pure spirulina powder, 1/2 lb (226 g).	15.00 \$
DA-S26	Selco DHA, 1 litre.	131.25 \$
ART-500A	Brine shrimp eggs 85%, box of 425 g.	90.00 \$
ART-500B	Decapsulated brine shrimp eggs, 425 g.	75.00 \$
INFUSYL	Infusyl, pack of 10 pills.	7.00 \$

Various fish food

Salmonidae food

The salmonidae food that we offer comes from the Skretting company for sizes 0.5 mm & 0.7 mm and from Ewos company for size 1.0 mm and beyond.

0.5 mm & 0.7 mm analysis

Crude protein (min):	52%
Crude fat (min):	20%
Crude fibre (max):	0.6%
Sodium (present):	1.1%
Calcium (present):	1.7%
Phosphorus (present):	1.3%
Vitamin A (min):	20,000 IU/kg
Vitamin D3 (min):	3000 IU/kg
Vitamin E (min):	300 IU/kg



1.0 mm analysis

Crude protein (min):	55%
Crude fat (min):	17%
Crude fibre (max):	2%
Sodium (present):	0.6%
Calcium (present):	1.5%
Phosphorus (present):	1.1%
Vitamin A (min):	7200 IU/kg
Vitamin D3 (min):	4800 IU/kg
Vitamin E (min):	300 IU/kg



Larval diet

Larval diet consists of very fine, granulated micro-capsules scientifically formulated to feed fish and shrimp during larval and post-larval stages. It has been used to successfully raise larvae of penaeid shrimp, trout, koi, catfish, lobster, shrimers, many game fish and tropical fish.

The formula consists of a highly-digestible mixture of marine and animal proteins, vegetable protein, yeast, vegetable starches, fish & vegetable oils, vitamin & mineral pre-mixes, pigments, antioxidants and biodegradable binders. Minimum protein content 50 percent. Sold in 500-gram (1.1 lb).

Analysis: Protein 50% min, fat 12% min, fibre 2.5% max, humidity 10% max, ash 9% max.

Four pellet sizes to cover the entire larval stage:

- < 100 microns
- 100 - 150 microns
- 150 - 250 microns
- 250 - 450 microns



ITEM	DESCRIPTION	PRICE
5192-1KG	Skretting food 0.5 mm, 1 kg.	18.50 \$
5194-1KG	Skretting food 0.7 mm, 1 kg.	18.50 \$
5196-1KG	Corey food 1.0 mm, 1 kg.	18.50 \$
FP-3.5	Pigmented floating food 3.5 mm, bag of 20 kg.	75.00 \$
FP-4.5	Pigmented floating food 4.5 mm, bag of 20 kg.	75.00 \$
FP-6.5	Pigmented floating food 6.5 mm, bag of 20 kg.	72.88 \$
AP1	Larval diet < 100 microns, 500 g.	P.O.D.
AP2	Larval diet 100 - 150 microns, 500 g.	P.O.D.
AP3	Larval diet 150 - 250 microns, 500 g.	P.O.D.
AP4	Larval diet 250 - 450 microns, 500 g.	P.O.D.

Instant algae

Instant algae is your easy solution for replacing or supplementing live microalgae in commercial fish, shrimp, shellfish and ornamental hatcheries, universities and research centers.

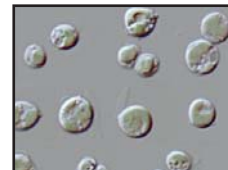


It is real marine microalgae, grown under laboratory conditions and concentrated for easy storage and long life. Instant algae is not alive and cannot be used as starter cultures - it is an inexpensive bulk feed.

Nannochloropsis

These are small green algae that are extensively used in the aquaculture industry for growing small zooplankton such as rotifers and for greenwater. They are also used in reef tanks for feeding corals and other filter feeders. It is 3600 times as dense as cultured algae, so 1 liter replaces almost 4 metric tons of live algae! Available in 1-quart & 1-pint bottles, and 1-liter bags. Nannochloropsis is the single best food for growing rotifers. It has a very high EPA level and can be frozen for long term storage. It also works well for greenwater.

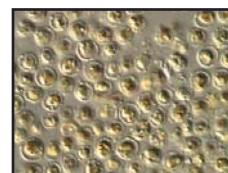
Shellfish hatcheries: works very well with mussels. It has not been traditionally used with oysters and clams, however a study currently being done at a university in Los Angeles indicates that it can work as well or better than Isochrysis and Pavlova with larvae and post set. **Storage:** instant algae nannochloropsis can be stored in a refrigerator for 3 months (best if stored at -1° to 3°C) or it can be frozen for longer shelf life (2+ years). When frozen, the algae will "hard-freeze" like ice.



Pavlova

Pavlova is a small golden/brown flagellate that is very similar to Isochrysis. It has a very high DHA profile and is excellent for enriching rotifers and other zooplankton. It is very difficult to develop the Pavlova, that is the reason why it is not produced by many incubation facilities. Pavlova is similar in nutritional profile to Isochrysis, however it has a more sophisticated sterol composition so it is very popular with cold water fish hatcheries (such as cod) for enriching rotifers.

Pavlova has both a high DHA and EPA profile so its good for enriching zooplankton. We have received very good reports on larval survival from hatcheries that use it to enrich brine shrimp. Pavlova works very well for oysters, clams, mussels and scallops. It is also used to increase the DHA/EPA levels in broodstock.



Aquaculture

Instant algae (continued)

Isochrysis

Isochrysis is a small golden/brown flagellate that is very commonly used in the aquaculture industry. It is high in DHA and often used to enrich zooplankton such as rotifers or Artemia. Used for DHA enrichment of rotifers.

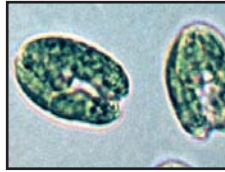
It is also a good size for feeding brine shrimp and copepods. Isochrysis is the most commonly used algae for oysters, clams, mussels and scallops.



Tetraselmis

Tetraselmis is a large green flagellate with a very high lipid level. It also contains natural amino acids that stimulate feeding in marine animals. It is an excellent feed for larval shrimp. Used in conjunction with Nannochloropsis for producing rotifers.

It is also a good size for feeding brine shrimp. A standard feed for oysters, clams, mussels and scallops.



Rotifer Diet HD

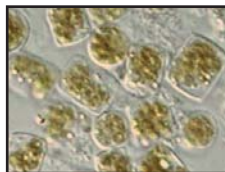
Rotifer Diet™ HD is a marine microalgae feed product for producing high quality, high density, low cost rotifers. Rotifer Diet HD is a combination of the microalgae species Nannochloropsis & Tetraselmis and results in a 20% increase in rotifer volume over pure Nannochloropsis.

It is a 100% complete feeding solution, needing no other feed additives to produce dense cultures. Rotifer Diet HD was specifically designed for high density rotifer systems, but also works exceptionally well in low density and batch cultures.

Thalassiosira weissflogii

Thalassiosira weissflogii is a large diatom (6-20µm x 8-15µm) that is used in the shrimp and shellfish larviculture industry. This algae is considered by several hatcheries to be the single best algae for larval shrimp. The large cell size (16 times the biomass of Chaetoceros and 3 times the biomass of Tetraselmis) extends the algae feeding period until the end of the PL stage. During the winter, this algae is about 15 microns, but shrinks to about 5 microns during the summer.

The color of TW varies from brown to green to yellow, depending on the amount of chlorophyll in the culture. This color change does not in any way affect the quality of the algae. Good for feeding copepods and brine shrimp. Due to its large size, TW is a very good feed for post-set (200 microns and larger) oysters, clams, mussels, scallops, and for broodstock conditioning.



Shellfish Diet

Shellfish diet is a mix of five marine microalgae that all have demonstrated success with a variety of shellfish including oysters, clams, mussels and scallops. A mixed diet provides a much better nutritional profile for all types of shellfish, increasing both growth rates and survival. Shellfish diet can be used with preset larvae all the way up through broodstock and will typically perform as well as algae so it can be used as a complete live algae replacement. 1/4 of Shellfish diet will replace the equivalent to 1800 liters of dense algae culture. This product is available in plastic bottles of 1/4, 1-pint and 1-gallon. The quantity of cells changes depending on the time of the year, but is approximately 2 billions of cells per ml.

25%	Isochrysis
20%	Pavlova
20%	Tetraselmis
30%	Thalassiosira weissflogii (TW)
5%	Nannochloropsis

ITEM	DESCRIPTION	PRICE
NANNO	Nannochloropsis 3600, 1-L format (frozen).	107.00 \$
PAVLO	Pavlova 1800, 950-mL format (refrigerated).	87.00 \$
ISOCH	Isochrysis 1800, 950-mL format (refrigerated).	87.00 \$
TETRA	Tetraselmis 3600, 1-L format (frozen).	114.00 \$
ROTIF	Rotifer Diet HD, 1-L format (frozen).	286.00 \$
THALA	Thalassiosira weissflogii, 950-mL format (refrigerated).	75.00 \$
SHELL	Shellfish Diet 1800, 950-mL format (refrigerated).	127.00 \$

Algae food

This two-parts product uses Guillard's 1957 formula. The perfect media for algae. Concentrated, easy to use, and contains all the necessary trace elements and minerals.

Guaranteed analysis

Solution A

Iron (Fe):	0.82%
Manganese (Mn):	0.034%
Cobalt (Co):	0.002%
Zinc (Zn):	0.0037%
Copper (Cu):	0.0017%
Molybdate (Mo):	0.0009%



Ingredients:

Deionized water, ferric chloride, EDTA, manganese chloride, cobalt chloride, zinc sulfate, copper sulfate, sodium molybdate.

Solution B

Nitrogen (N):	9.33%
Phosphate (P2O5):	2.0%
Vitamin B1:	0.07%
Vitamin B12:	0.0002%
Biotin:	0.0002%



Ingredients:

Deionized water, sodium nitrate, monosodium phosphate, thiamin hydrochloride, vitamin B12, biotin.

ITEM	DESCRIPTION	PRICE
3691077A	F2 algae food, Part A Gallon.	75.00 \$
3691077B	F2 algae food, Part B Gallon.	75.00 \$

Vibratory feeders

These vibratory-type feeders are made from durable plastic and can be easily cleaned. They are specially designed to give different sizes of food. Very high accuracy when delivering small quantities over several times, these units can deliver many types and sizes of food thanks to their unique adjustment technique and the flexibility of the vibration motor (intensity adjustment).

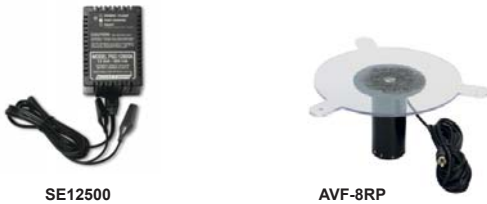
When using these vibratory feeders on the 115 volts AC, it is really important to use a variable power adapter (**BE327**) for each feeder. It is also possible to add a deluxe feeder controller with built-in timer (**H-1201**). The plate used for these vibratory feeders are transparent, which makes it easier to see through the feeder for checking the quantity of food. Timers also available. If you wish to get familiar with the installation procedures for a vibratory feeder, please call at Aquamerik.



H-1201

BT1245

BE327



SE12500

AVF-8RP

Belt feeders

Available at Aquamerik, these belt feeders slowly dispense almost any dry medication, chemical or feed over a 12- or 24-hour period at a capacity of 5 or 10 lbs, which allows for fish to receive a small quantity of food over several times a day. If shorter length or intermittent feeding is desired, the conveyor belt can be pulled back halfway or feed can be spaced on the belt. These feeders will reduce labor costs and improve growth rates.

Housed in a weatherproof case and powered by a spring-wound stainless steel clock mechanism. Feature corrosion-resistant clocks. All clock are extremely durable. Setting the feeders is as easy as lifting the lid, pulling back the belt and loading the feed. Repair parts are available and repairs can be made easily on site.

- Easy to clean and maintain.
- No electrical power required.
- Weatherproof construction.
- Trouble-free operation.
- One-year warranty from date of purchase.



AQM-120A



BF-12

ITEM	DESCRIPTION	PRICE
VIBRATORY FEEDER		
AF6-A	12 VDC, capacity of 0.4 liter, Aquamerik plastic.	127.00 \$
AF7-A	12 VDC, capacity of 3.7 liters, Aquamerik plastic.	225.00 \$
AF25	12 VDC, capacity of 25 lbs, fibreglass.	462.00 \$
AVF-6	12 VDC, capacity of 0.5 liter	183.18 \$
AVF-7	12 VDC, capacity of 1.75 liter	283.98 \$
AVF-8	12 VDC, capacity of 3 liters	334.38 \$
DIRECTIONAL FEEDER		
AF25-1	12 VDC, capacity of 25 lbs, fibreglass.	595.00 \$
AQ-50LBFED	12 VDC, capacity of 50 lbs, plastic.	712.00 \$

Accessories for feeders:

BT1245	Rechargeable battery 12 volts, 7 amps.	39.75 \$
SE12500	Battery charger for BT1245, 12 volts.	36.50 \$
BE327	12 VDC adapter for 115 volts.	28.60 \$
H-1201	Deluxe feeder controller.	668.00 \$
AF6-A-BR	Replacement vibratory motor & plate for AF6-A.	59.25 \$
AF7-A-BR	Replacement vibratory motor & plate for AF7-A.	105.00 \$
AVF-6RP	Replacement vibratory motor & plate for AVF-6.	115.98 \$
AVF-7RP	Replacement vibratory motor & plate for AVF-7.	132.78 \$
AVF-8RP	Replacement vibratory motor & plate for AVF-8.	166.38 \$

ITEM	DESCRIPTION	PRICE
BBF12	5-lbs belt feeder, 12-hours.	431.21 \$
BBF24	5-lbs belt feeder, 24-hours.	431.21 \$
BF-12	10-lbs belt feeder, 12-hours.	509.95 \$
BF-24	10-lbs belt feeder, 24-hours.	509.95 \$
AQM-120A	Clock mechanism for 12-hours models.	150.58 \$
AQM-240A	Clock mechanism for 24-hours models.	150.58 \$
AQM-120B	Maintenance kit 12-hours (motor, spring, access.)	168.00 \$
AQM-240B	Maintenance kit 24-hours (motor, spring, access.)	168.00 \$
AQR-120	Spring for all models.	35.00 \$
AQT-120	Replacement cloth for BF-12 & BF-24.	114.43 \$
BF-COUV	Clear cover for belt feeder.	32.75 \$

Aquaculture

Koi Cafe feeders

The Koi Café™ (feeders for ornamental fish) is the first automatic feeder designed to feed ornamental fish. Simply adjust the timer powered by a 6-volt rechargeable battery (you can select the food quantity to be distributed and the feeding period).

Your fish will get used to specific hours for the feeding time and you can watch them at the same time. Now you will be able to escape for a weekend without having to worry about feeding your fish by yourself.

With the Koi Café™, you can program the digital timer for the feeding period at any time you wish (up to 8 times per day) and the quantity of food to distribute. Available in 3 colors: red, green and champagne (must be specified during the ordering process). Weighs 10 lbs (4.5 kg). Solar charger available. Two-year warranty.



SF-36



SF-36 with charger SX-61

ITEM	DESCRIPTION	PRICE
SF-36	Koi Cafe feeder.	367.98 \$
SX-61	Solar charger for Koi Cafe feeder.	159.98 \$

Pond feeders

Designed to handle a variety of granules, these pond feeders can feed your fish up to 24 times per day. The projection distance, which has the shape of a piece of pie, is between 5 to 50 feet and covers up to 30 degrees of surface. Available with straight or adjustable stands, galvalume or green color and a capacity of 125 or 425 lbs. Built-in battery tester. Connections for solar panels can be found on each side of the feeder.



AFC425GA-LR (adjustable type)

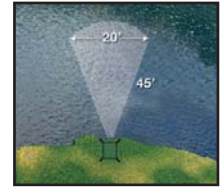
AFC125GR-LD (straight type)



ITEM	CAPACITY	TYPE	COLOR	PRICE
AFC125GA-LD	125 lbs	Straight	Galvalume	1 280.00 \$
AFC125GA-LR	125 lbs	Adjustable	Galvalume	1 280.00 \$
AFC125GR-LD	125 lbs	Straight	Green	1 360.00 \$
AFC125GR-LR	125 lbs	Adjustable	Green	1 360.00 \$
AFC425GA-LD	425 lbs	Straight	Galvalume	1 440.00 \$
AFC425GA-LR	425 lbs	Adjustable	Galvalume	1 440.00 \$
AFC425GR-LD	425 lbs	Straight	Green	1 600.00 \$
AFC425GR-LR	425 lbs	Adjustable	Green	1 600.00 \$

Directional pond feeders

These directional feeders use a high-velocity centrifugal air blower system. Feed pellets are projected in a wedge-shaped feed pattern (see image) at approximately 45-feet in length by 20-feet in width, without dropping feed within 5-feet of the feeder. The digital timer (included with the feeder) controls a dual motor system that delivers the flow of feed that is introduced into the air blower system. Straight legs for piers and docks; adjustable legs for sloping pond banks. The maximum capacity of floating fish feed is 70 or 215 lbs, depending on the model. 12V / 7A rechargeable battery included. 2-watt solar charger available in option.



AX2W

Available in galvanized or green finish (-G).



AX70AL (adjustable type)



AX215ALG (adjustable type)



AX70DL (straight type)

ITEM	CAPACITY	TYPE	COLOR	PRICE
AX70-AL	70 lbs	Adjustable	Galvanized	1 174.38 \$
AX70-ALG	70 lbs	Adjustable	Green	1 174.38 \$
AX70-DL	70 lbs	Straight	Galvanized	1 174.38 \$
AX70-DLG	70 lbs	Straight	Green	1 174.38 \$
AX215-DL	215 lbs	Straight	Galvanized	1 426.38 \$
AX215-AL	215 lbs	Adjustable	Galvanized	1 426.38 \$
AX215-ALG	215 lbs	Adjustable	Green	1 426.38 \$
AX215-DLG	215 lbs	Straight	Green	1 426.38 \$
AX2-W	Solar charger for feeder, 2 watts.			132.78 \$

Automatic bird feeder

This automatic bird feeder is the ideal feeder for birds in your backyard. Strong, sturdy, and varmint resistant, this feeder is the most dependable bird feeder on the market.

Adjust the feed flow lever and determine the number of seconds per feeding to dispense the right amount of feed every time. A built-in sight gauge makes checking your feed level easy. The automatic bird feeder holds 6 to 8 lbs of bird feed. Each bird feeder comes equipped with a rechargeable 6 volt battery and basic timer that is capable of feeding up to 5 times per day. Available in three colors: red, green and champagne.



BIRD-RD (red)



BIRD-GR (green)



BIRD-CH (champagne)

ITEM	DESCRIPTION	PRICE
BIRD-RD	Automatic bird feeder, red.	400.00 \$
BIRD-GR	Automatic bird feeder, green.	400.00 \$
BIRD-CH	Automatic bird feeder, champagne.	400.00 \$

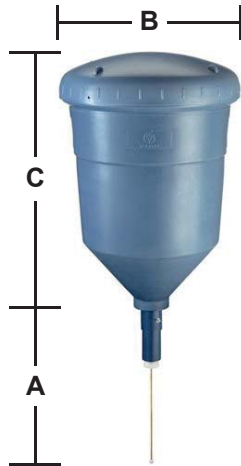
Pond feeder (battery powered)

Flake food or pellets are dispensed slowly over several hours each day (adjustable quantity and feeding time). This feeder can hold close to 2 cups (approximately 200 grams) of food.

Fully weatherproof, it can be mounted on a pole by the edge of the water or suspended over the water. One AA battery (not included) required for quartz-timed motor. This feeder measures 6¾" x 3¾" x 7¼". Three-year warranty.



ITEM	DESCRIPTION	PRICE
PEN-PF21	Pond feeder (6¾" le x 3¾" wi x 7¼" he).	82.92 \$



Pendulum demand feeders

The unique twist-lock lid is wind and varmint-proof on these high-quality, UV-resistant, polyethylene hoppers. All four sizes have the same pendulum demand feeding mechanism for #4 crumble to 1/4" pellets. Batteries not included or needed. One-year warranty.

Note: bottom of the feeder should be at least 20" above the surface of the water.

ITEM	DESCRIPTION / CAPACITY	A	B	C	PRICE
FH-221	Pendulum feeder, 22 lbs	23"	12"	14"	418.38 \$
FH-441	Pendulum feeder, 44 lbs	23"	15"	18"	451.98 \$
FH-881	Pendulum feeder, 88 lbs	23"	19"	26"	552.78 \$
FH-133	Pendulum feeder, 132 lbs	23"	23"	33"	670.38 \$

Auger feeders

These feeders are used throughout the world in commercial aquaculture facilities, providing perfectly controlled feeding in fish ponds and production plants. They are designed to achieve reduced feeding expenditures and improved feed ratios, and can be used both indoors and outdoors.

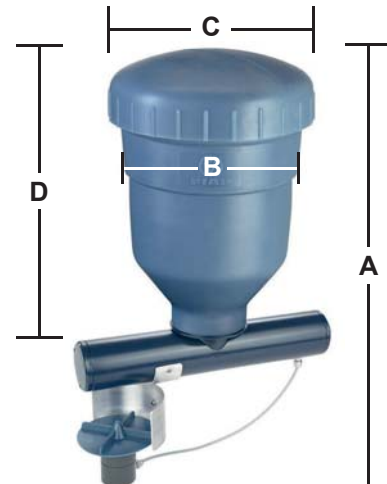
They feature a rheostat that can be set for both speed and duration. It's blockage-free auger screw is driven by a 12 VDC motor. A power supply and time controller are needed but not included.



FS-4059



ITEM	DESCRIPTION / CAPACITY	A	B	C	D	PRICE
FS-4022	Auger feeder, 22 lbs.	26"	10"	12"	21"	939.18 \$
FS-4044	Auger feeder, 44 lbs.	27"	12"	15"	21"	972.78 \$
FS-4088	Auger feeder, 88 lbs.	35"	15"	19"	30"	1 006.38 \$
FS-4132	Auger feeder, 132 lbs.	42"	19"	23"	36"	1 090.38 \$
FS-4222	Auger feeder w/ spreader, 22 lbs.	26"	10"	12"	21"	1 039.98 \$
FS-4244	Auger feeder w/ spreader, 44 lbs.	27"	12"	15"	21"	1 073.58 \$
FS-4288	Auger feeder w/ spreader, 88 lbs.	35"	15"	19"	30"	1 123.98 \$
FS-4232	Auger feeder w/ spreader, 132 lbs.	42"	19"	23"	36"	1 174.38 \$
FS-4059	Auger mechanism.	--	--	--	--	737.58 \$



Aquaculture

Controller for feeder

This controller allows for operating up to 4 different feeders with one device. All settings as well as feeding periods (0 - 99 seconds), breaks (0 - 99 minutes) and motor speeds can be defined individually for the single outputs. Any settings made will be saved. Voltage of 115 / 230 volts, power of 50 / 60 Hz.



ITEM	DESCRIPTION	PRICE
P1590	Controller for feeder (115/230V, 50/60Hz).	1 996.80 \$
P1594	5-meter cable for controller.	117.10 \$
P1594-1	10-meter cable for controller.	216.78 \$
P1594-2	20-meter cable for controller.	334.38 \$
P1591	Controller socket.	43.66 \$
P1592	Controller coupler connector.	28.62 \$
P1593	Controller connector plug.	43.66 \$

12 VDC inverters

These power inverters convert low voltage, direct current (DC) to a 115- or 120-volt alternative current (AC) when connected to the 12V outlet in your car, truck, RV, or directly from a dedicated 12V battery. High-input voltage protection with automatic shutdown.



ITEM	WATTS	INLET / OUTLET	WARRANTY	PRICE
EW-420USB	420	12 VDC / 120 VAC	12 months	94.43 \$
EW-800USB	800	12 VDC / 120 VAC	24 months	136.28 \$
EW-1100	1100	12 VDC / 115 VAC	24 months	203.78 \$
EW-2000	2000	12 VDC / 115 VAC	24 months	431.93 \$
EW-3000	3000	12 VDC / 115 VAC	24 months	584.48 \$
EW-4000	4000	12 VDC / 115 VAC	24 months	809.93 \$
EW-5000	5000	12 VDC / 120 VAC	18 months	1 347.23 \$

Digital timers

This high-quality timer is one of the most reliable you can find on the market thanks to its multiple features necessary for controlling feeders. The programming is permanently memorized, even when a power failure occurs. Each startup point can be adjusted for a different motor speed in order to control the feeding distance. **Three-year warranty.**



- Battery power indicator.
- Easy to read LCD display.
- 6 or 12-volts supply, low power consumption.
- 24 individually-adjustable startups from 1 to 99 seconds.
- Detector / protector feature if the motor doesn't work adequately.

ITEM	DESCRIPTION	PRICE
DFT3REV8	Digital timer - 6 or 12 VDC, 10 amps.	365.00 \$
DFT3REV8-2	Digital timer - 115 VAC.	580.00 \$

Cyclic timers

Aquamerik timer can be used for several applications of control (valves, pumps, etc) or for the feeding. Adjusts in a matter of seconds by determining the "ON" and "OFF" cycles between 0.05 seconds and 100 hours with an accuracy of $\pm 1\%$.



Available in 12 VDC, 115 VAC and 230 VAC (50 or 60 Hz) with a capacity of 5 amps or more with one optional contractor.

A sturdy PVC case protects the timer and its components. A plug allows to connect your accessories. In option, it is possible to add an electric eye to stop operation during the night.



ITEM	DESCRIPTION	PRICE
DFT-4/12-5	12 VDC, 5 amps.	249.69 \$
DFT-4/12-20	115 VAC - 12 VDC, 20 amps.	465.00 \$
DFT-4/12-40	115 VAC - 12 VDC, 40 amps.	485.00 \$
DFT-4/115-5	115 VAC, 5 amps.	222.94 \$
DFT-4/115-10	115 VAC, 10 amps.	359.00 \$
DFT-4/115-20	115 VAC, 20 amps.	372.50 \$
DFT-4/230-5	230 VAC, 5 amps.	289.00 \$
DFT-4/230-30	230 VAC, 30 amps.	398.50 \$
DFT-B	Photocell option.	95.00 \$

Two-channel timer

This two-channel timer has 2 adjustment knobs for LED lighting intensity (between 5% & 100%) and 7 On/Off schedule groups by channel. Only suitable for LED type lighting. 24 VDC of power supply, capacity of 6 amps DC by channel. LED light bars available at Aquamerik.



ITEM	DESCRIPTION	PRICE
LIC-24DC-12A	Two-channel timer with LED display.	195.00 \$

Self-cleaning artemia & rotifer concentrator

The Aquamerik concentrator offers a new, safe, fast and automatic solution to concentrate and rinse nauplii in a commercial production situation. Much better than any other equipment on the market thanks to its variable speed rotating drum. Our concentrator includes many features like a motorized rotating drum, a self-priming pump, a motorized inlet valve, an air compressor and a control panel for automation. Thanks to this system, it is possible to go from 200 to 13,500 nauplii by millilitre in 8.7 minutes; that means you can increase the concentration by 67.5 times in less than 9 minutes.

This concentrator is an essential part of the artemia production system. Its automatic operation feature allows to rapidly accomplish many things like the concentration, rinsing and harvesting of the nauplii in commercial hatcheries. **Please contact one of our technicians for more information about this product.**



Automatic gutting machine

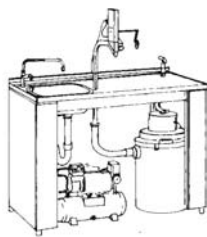
Safe and easy to use, the "Salmocoupe" evisceration system works rapidly and enables the user to clean his fish without tampering their quality. Available with different vacuum sizes (9 and 16 gallons), this kit is supplied with a sink and a table. On special orders, you can receive it without the sink, table or compressor. Unlike any other automatic gutting machine, the "Salmocoupe" versatility allows the user to eviscerate and clean any fish size without further adjustments. Starting and stopping the system takes only a few minutes, allowing occasional uses. The "Salmocoupe" allows you to clean up to 450-500 commercial size trout per hour, which represents considerable savings on workforce and it insures the operation profitability. These machines are 100% stainless steel and they use just a few moving parts which increase its durability and minimize its maintenance.

Model A (complete)

Complete kit in stainless steel with a pneumatic evisceration head, a counter and 24" x 24" sink, a continuous flow compressor and a heavy duty guts vacuum cleaner (industrial) with stainless steel tank. Ready to use, you just have to connect the water tap to complete it all.



- Safe
- Quick
- Economical



ITEM	DESCRIPTION	PRICE
EVI-A-9	Gutting machine kit with 9-gal tank.	6 571.00 \$
EVI-A-16	Gutting machine kit with 16-gal tank.	6 869.00 \$

Model C (automatic head)

Automatic-type gutting head only.

- Without vacuum.
- Without working table.
- Without air compressor.

ITEM	DESCRIPTION	PRICE
EVIC-C	Automatic gutting head only.	3 302.00 \$

Model B (automatic, for wall mount)

On the table is mounted an adjustable vacuum head, a hose and a guillotine blade operated by air pressure.

This blade is specially designed to eliminate the risk of injury for the user when cutting the fish off to remove the intestine and gills remains.

An arm is attached to the suction hose to install a knife intended to open the fish abdomen. The guillotine blade and the knife are designed for maximum safety.



ITEM	DESCRIPTION	PRICE
EVI-B-9	Gutting machine for wall mount with 9-gal tank.	4 456.00 \$
EVI-B-16	Gutting machine for wall mount with 16-gal tank.	4 746.00 \$

Gutting knife

Here's a safe gutting knife that is very efficient for opening and cleaning all kinds of fish. Sturdy plastic; specially designed for evisceration; can be used alone or with the "Salmocoupe".



ITEM	DESCRIPTION	PRICE
CEM-1	Blue gutting knife.	6.10 \$

Aquaculture

Manual counter

Easily fits in your hand to be thumb operated. The register advances by one digit, up to 9999, each time the button is pressed. A turn of the side knob resets the register back to zero. It's a great tool for counting algae cells, zooplankton, fry, etc.



ITEM	DESCRIPTION	PRICE
SS-0820	Portable manual counter, from 0 to 9999.	21.14 \$

Stop watch

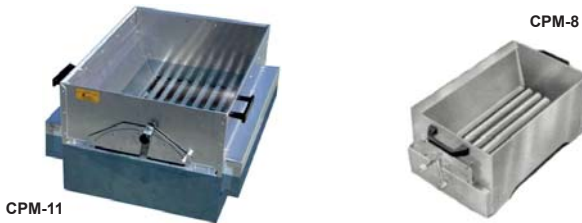
Able to count up to 24 hours with a resolution of 0.01 second for the first 30 minutes and 1 second afterward. The main features are the 12/24-hour clock, a calendar and a ring. Battery and neck strap included with the stop watch.



ITEM	DESCRIPTION	PRICE
8112	Watertight digital stop watch.	18.54 \$

Manual fish graders

Manual fish graders are designed for people who wish to classify small quantities of fish, with low expenses. They are manufactured in stainless steel and marine grade aluminum for an excellent strength and a minimum of maintenance. The same grader can classify up to 30 fish sizes (0 to 13 inches). It adjusts by itself in a few seconds thanks to a handle and a calibration ruler fixed on the fish grade. **CPM-11** and **CPM-13** are sold with a float.



ITEM	GRADING	DIMENSIONS	PRICE
CPM-8	Trout from 0" to 8"	12" x 18"	695.00 \$
CPM-11	Trout from 2" to 11"	15" x 17"	1 285.00 \$
CPM-13	Trout from 1" to 13"	21" x 28"	1 806.00 \$

Fish measuring boards

Built with light plastic, these measuring boards can be used for several years. Fish measurement is made in a methodical way. **PM-75B** model offers a mobile reference stem for more precision. We also manufacture for your special needs.



ITEM	DESCRIPTION	PRICE
5640	Measuring board, 30 cm (12")	108.00 \$
PM-24	Measuring board, 60 cm (24")	126.00 \$
PM-75	Measuring board, 75 cm (30")	189.00 \$
PM-75B	Measuring board, 75 cm (30")	527.00 \$
5641	Measuring board, 100 cm (39")	365.00 \$

Aquamerik automatic fish graders

These fish graders have been made to increase productivity and to make work much easier for fish farmers. Grading fish by size gives better efficiency and maximal use of feeding costs by having good conversion rates. Mainly developed for aquaculture, these automatic fish graders are supplied worldwide to grade different fish species.

Made only with high quality material, the structure is built with tubular aluminum and the moving parts of UHMV (plastic) that insure the best resistance ever and many years of service to come with no maintenance. The conveyer works with a 110 volts electrical motor. In order to avoid working problems, each grader is rigorously tested before shipping.

Moreover, these devices are specially designed to eliminate the stress caused by intensive grading. With this system, fish are always in the water. From each water output, you can install a flexible pipe to lead fish in the desired tank or pond to regroup them in function of their size. It is also possible to install a fish counter at the end of each pipe and stop evaluating their number.



ITEM	CAPACITY	DIMENSIONS (le. x wi. x he.)	WEIGHT	OUTPUT	FISH SIZE	WATER FLOW	PRICE
CPA-3	50 000 fish / hour	2.40 x 0.75 x 0.60 m	100 kg (220 lbs)	3	2 g to 300 g	300 LPM (80 GPM)	P.O.R.
CPA-4	3 - 4 Tons / hour	4.20 x 1.01 x 0.70 m	280 kg (616 lbs)	4	5 g to 1.6 kg	450 LPM (120 GPM)	P.O.R.

Aquaculture laboratories

Aquamerik offers the possibility to fish farmers, researchers or simply lovers of the aquatic world to design a custom aquatic environment. We're dedicated to provide researchers with the finest systems and support available. With an exclusive focus on systems for husbandry of aquatic species and a strong partnership with our customers, we're able to continue our leadership in providing new systems, features and services.

Do not hesitate to communicate with one of our technicians to find out more about how we can help you achieve the results you want. Here are some examples of aquaculture laboratories dedicated for different applications like prefabricated shelves designed for biologists and embryo production systems specifically for aquatic species and even public square installations (aquatic parks, aquariums, etc).



XR system

The main concept of shelving improves the overall environment, providing contrast for:

- Feeding;
- Reducing algae growth;
- Improving biosecurity;
- Reducing maintenance time;
- Making feeding easier.



This system is effective for a variety of applications: warm freshwater, fresh saltwater, they accept small and large holding tanks. Only one electrical connector needed for the entire system, which makes it safer for each operation.

Multi-glass tank system

- Oversized
- 5-stage filtration.
- Optional control panel.
- Alarm for low water level.
- Pressure relief valve
- Filtration desactivable to allow maintenance without having to stop the system.



Mass embryo production system

Designed specifically for the production of large numbers of zebrafish embryos for drug screening, toxicology assays/experiments or propagation of fish. Allows for the housing and maintenance of thousands of fish in a single tank, reducing labor required for husbandry and system maintenance.

Multiple spawning sites, adjustable to optimal depths and locations within the tank, maximize embryo production.

Optional light cycle dome with dimmable light cycle timer allows for the collection of embryos at any time of the day. Carbon filter on incoming water line ensures optimal water quality.



Algae growing system

